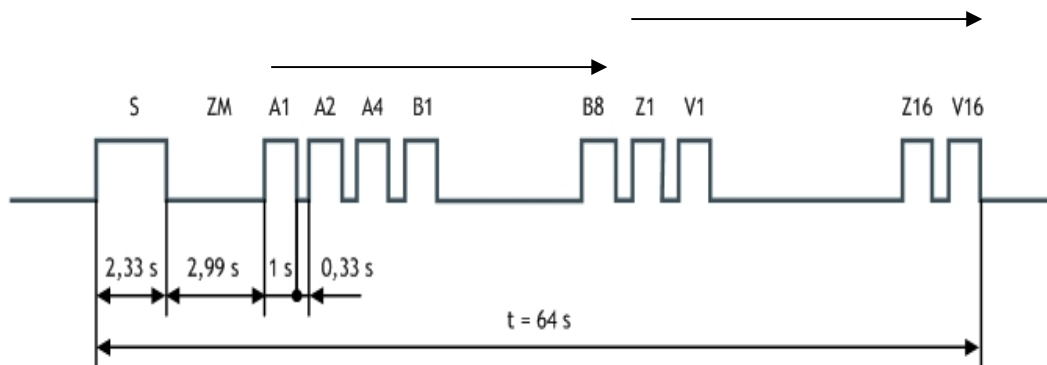


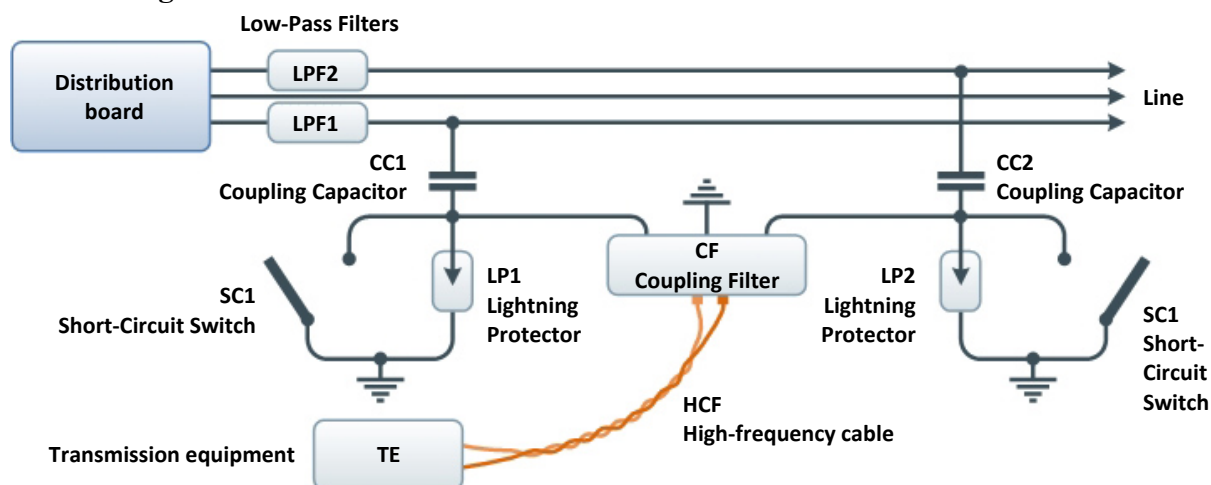
1. Systems and bands. Please, assign the following systems to appropriate bands by using arrows.

Mass Remote Control	Remote Signalling Remote Control Remote Measurement	Narrowband PLC services	Broadband BPL services
$f = 4 - 150 \text{ kHz}$	$f > 150 \text{ kHz}$	$f = 0.3 - 3,4 \text{ kHz}$	$f < 300 \text{ Hz}$

2. W2S command series of mass remote control. Please, fill in the names of the labelled sections of the command series of mass remote control.



3. High-frequency power plants telephony. Please, assign the following terms to the appropriate description and fill in the abbreviation based on their location in the following scheme.



Lightning arrester

Prevents the entry of network components to communication section

Routing detent

It works on the principle of single-channel telephony and creates a narrowband v<sub>f</sub> telecommunication channel

Capacitive section

Protects communication devices from overvoltage, for example in case of coupling capacitor failure

Impedance match

It is used for safe short-circuits during maintenance

Transmission facility

It is implemented as a notch filter to the band of a signal. Prevents entering the signal to a substation, and thus, saves the signal energy

Earthing (ground)

It provides impedance match between the coupling and telecommunication section



Erasmus+

This project has been funded with support from the European Commission.

This publication [communication] reflects the views only of the author, and the Commission cannot be held responsible for any use which may be made of the information contained therein.